

MLS Area LH

Listings	This Month			Year-to-Date		
	Aug 2021	Aug 2020	Change	2021	2020	Change
Single Family Sales	79	65	+21.5%	564	450	+25.3%
Condo/TH Sales	--	--	--	1	--	--
Total Sales	79	65	+21.5%	565	450	+25.6%
New Homes Only	26	22	+18.2%	195	139	+40.3%
Resale Only	53	43	+23.3%	370	311	+19.0%
Sales Volume	\$39,090,309	\$24,954,472	+56.6%	\$263,739,029	\$166,986,400	+57.9%
New Listings	84	70	+20.0%	516	581	-11.2%
Pending	8	84	-90.5%	63	552	-88.6%
Withdrawn	5	4	+25.0%	41	28	+46.4%
Expired	2	4	-50.0%	4	23	-82.6%
Months of Inventory	0.8	1.5	-42.8%	N/A	N/A	--

Average	This Month			Year-to-Date		
	Aug 2021	Aug 2020	Change	2021	2020	Change
List Price	\$484,428	\$385,962	+25.5%	\$452,651	\$376,196	+20.3%
List Price/SqFt	\$217	\$157	+38.0%	\$194	\$160	+20.9%
Sold Price	\$494,814	\$383,915	+28.9%	\$466,795	\$371,081	+25.8%
Sold Price/SqFt	\$221	\$156	+41.5%	\$199	\$158	+25.9%
Sold Price / Orig LP	102.5%	98.9%	+3.6%	104.2%	97.7%	+6.6%
Days on Market	14	74	-80.7%	21	79	-74.1%

Median	This Month			Year-to-Date		
	Aug 2021	Aug 2020	Change	2021	2020	Change
List Price	\$399,000	\$319,900	+24.7%	\$375,000	\$312,925	+19.8%
List Price/SqFt	\$198	\$156	+26.8%	\$184	\$159	+15.6%
Sold Price	\$409,000	\$301,950	+35.5%	\$398,730	\$309,565	+28.8%
Sold Price/SqFt	\$207	\$156	+32.6%	\$188	\$158	+19.2%
Sold Price / Orig LP	100.0%	100.0%	+0.0%	101.0%	99.0%	+2.0%
Days on Market	4	40	-90.0%	4	46	-91.3%

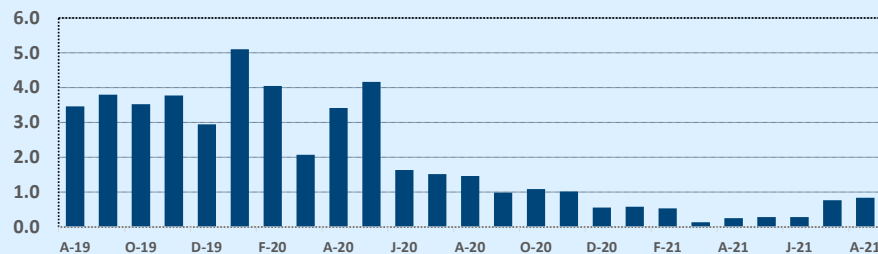
Residential Statistics

Independence Title

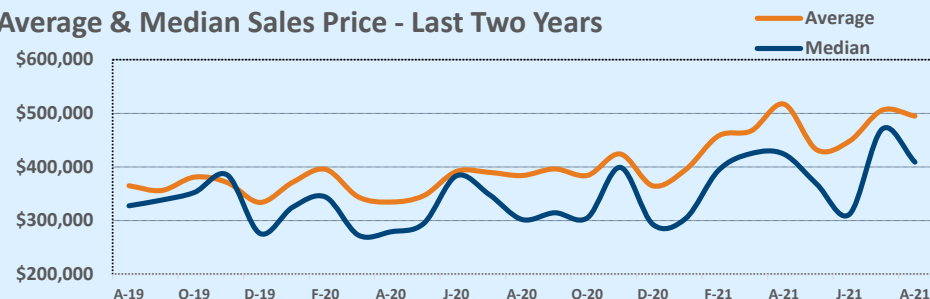
August 2021

Price Range	This Month			Year-to-Date		
	New	Sales	DOM	New	Sales	DOM
\$149,999 or under	1	1	3	2	2	88
\$150,000- \$199,999	--	1	24	2	1	24
\$200,000- \$249,999	3	1	13	12	8	23
\$250,000- \$299,999	1	19	3	33	158	9
\$300,000- \$349,999	4	7	1	49	76	9
\$350,000- \$399,999	9	7	6	51	39	34
\$400,000- \$449,999	5	7	12	48	44	39
\$450,000- \$499,999	13	6	15	49	42	24
\$500,000- \$549,999	8	6	9	30	37	12
\$550,000- \$599,999	7	4	7	53	29	39
\$600,000- \$699,999	7	4	28	54	49	33
\$700,000- \$799,999	5	4	3	25	28	24
\$800,000- \$899,999	6	3	9	41	20	22
\$900,000- \$999,999	4	5	26	27	14	16
\$1M - \$1.99M	10	4	113	38	17	32
\$2M - \$2.99M	--	--	--	--	--	--
\$3M+	1	--	--	2	1	108
Totals	84	79	14	516	565	21

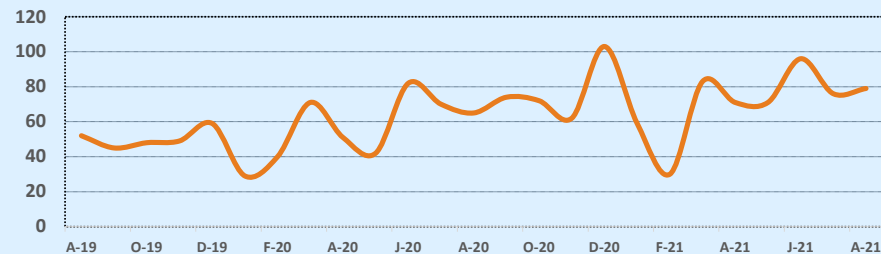
Months of Inventory - Last Two Years



Average & Median Sales Price - Last Two Years



Number of Sales - Last Two Years



Based on information from the Austin Board of REALTORS® (alternatively, from ACTRIS). Neither the Board nor ACTRIS guarantees or is in any way responsible for its accuracy. The Austin Board of REALTORS®, ACTRIS and their affiliates provide the MLS and all content therein "AS IS" and without any warranty, express or implied. Data maintained by the Board or ACTRIS may not reflect all real estate activity in the market.